



# manufacturing & solutions

Modern life-style is evolving continuously and has given rise to several new needs. In order to meet these needs New Processing Plants have been set up globally. For creating innovative products these processing plants need advanced technologies and equipment.

SS Engineers & Consultants are a leading supplier of food processing equipment and solutions which includes machinery, complete flow layouts, product lines, CIP Systems, Steam pipe lines, hot and cold water systems, piping and drainage.

Established in the year 1999 SS Engineers & Consultants is a globally recognized manufacturer and supplier of a wide range of Equipments and services.

SS Engineers & Consultants has total 4 manufacturing plants located in India. The spacious manufacturing facility, technologically advanced state-of-the-art machinery and modern Infrastructure makes SS Engineers & Consultants very competitive in this growing world.

EQUIPMENTS FOR  
MINI & LARGE FOOD FACTORIES

 **SS Engineers  
& Consultants**





## SS Engineers & Consultants as Turn-key Project executors

SS Engineers & Consultants was established between the end of 1999 by its parent company SRI PUMPS & FITTINGS INDL. CORP.

From the beginning the family-run company specialized in the construction of equipment for the dairy industry and developed later into the field of soft drinks, juices and beverages in general.

Today SS Engineers & Consultants name is among the most well-known companies in the dairy and beverages sector of India. The company is internationally acclaimed & acknowledged, particularly in the realization of "turn-key" projects, and in the specific processing sectors, such as production of cheese, pasteurization and packaging ones.

Looking more closely at the company's product ranges, the SS Engineers division covers research, project design along supply of complete systems for the milk, cream – fermented food products, fresh soft cheeses, and other liquid foods.

In this field the company has a wide experience and can cover all equipment needs suitable for small or big production house of pasteurized drinking milk, yoghurt, different kinds of cheese, butter, etc.

In the beverage field, the range includes pre-mix units, sugar dissolving systems, filters, mixing and storage tanks as well as the complete thermal treatment up to the filling. These kinds of plants are "tailor-made" designed according to customer's specific demands. The company is also renowned and appreciated for following products: Batch pasteurizers; discontinuous cream pasteurizers; butter chums, khova making, and other special purpose equipments.

Twenty years of experience in food-stuff industry, through its long lasting cooperation with many companies world wide, today SS Engineers & Consultants is able to meet the uncompromising demands in processing technology and Food production in India.

## Professional Food solution Provider

"Small-Medium-Large"



**SS Engineers & Consultants**

# got milk?



SS Engineers and Consultants is a client centered consultancy organization, caters to the specific needs of its clients in Project process productivity and Quality.

The aim of the firm is to execute the projects from concept to commission covering Site selection, land development, civil and electrical works, product design and development including packaging, identifying, procurement of machinery, erection and commissioning, sourcing of Laboratory equipment, setting the laboratory and establish quality norms and develop SOP (Standard Operating Procedures), designing the piping, Power distribution, Effluent treatment plants, Environmental impact analysis under one roof. SSEC prepares Project reports, Project appraisal, undertaking turn key projects.

SS Engineers & Consultants have vast experience, expertise in Dairy, Food and Beverage Industry, Plastic and Packaging Industry, Chemical, Cosmetic and Toiletry products.

**Food manufacturing & packing is never an easy job, it contains hundreds & thousands of tasks. But, with SS Engineers & Consultants, you can now make it the easiest way.**

Our business structure ensures that customers can obtain world-leading equipment, solutions and services, backed by some of the best professional support in the industry, all from one source.

SS Engineers & Consultants global networks ensure fast delivery and guarantee the best service worldwide. Our technology helps to speed innovation and time to market for our customers' products.

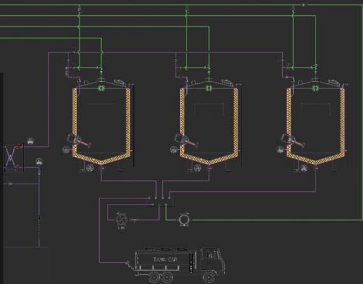
One stop solution for the milk processing plant machinery along with plant designing and products consulting from our highly skilled dairy technologists and engineers.

Dairy processing is rising rapidly around the globe to meet the increasing appetite for milk and milk products from an ever-growing population. SS Engineers & Consultants years of experience and comprehensive know-how is leading the way in processing one of the world's most important and versatile foods.

SS Engineers & Consultants offers customized turn-key solutions to dairy industries with highly proficient milk processing plants and machines. We design, engineer and supply complete plants, processing lines and equipment for treating raw milk, filling and packaging of milk and milk-based products.

Our firm has installed and executed many projects of milk processing plants with capacity ranging from three thousand liters per day to one lakh liters per day. All our milk processing plants was designed and engineered to meet strict hygiene, food safety and quality standards.

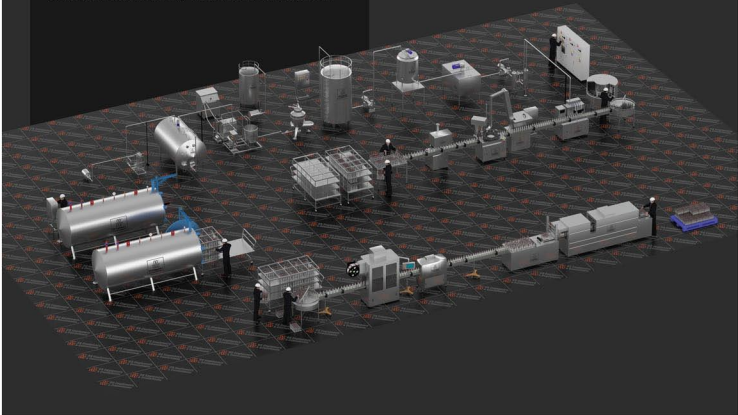
Our range of processing components and complete process lines have been developed to ensure that every stage of milk processing, from milk reception and clarification, heat-based pasteurization and homogenization, through to final product processing and storage, meets the most stringent safety requirements without losing valuable nutrients in the milk.



SS Engineers offers industry-leading technologies and systems for processing a wide range of liquid milk and milk-derived products including pasteurized/fresh milk, extended shelf-life products and ultra-heat treated milk, flavoured milk, milk mix drinks, cream and whipped cream, condensed and sweetened milk.

Backed by years of experience, know-how and technological expertise, SS Engineers develops and offers complete tailor-made production plants, fully integrated processing lines and individual unit operations for the treatment of raw milk and for manufacturing, process cooling, drying, filling, packaging and bagging milk-based and powdered products. From butter or ice cream to yogurt and cheese, infant formula, milk powder, whey and its derivatives.

## Flavoured Milk Processing Plant Layout





## From farm to table – Dairy Processing

Our company is identified as the most validated equipments Manufacturers and suppliers for customers who manufacture Pure Desi Ghee. the Indian traditional Ghee has a great demand in the international market for being Pure & authentic. By following stringent manufacturing procedure through quality process equipments our customers offers superior quality Ghee which is hygienically packed absolutely pure, hygienic and tasty.

SS Engineers is leading the way to develop and deliver latest technology Milk processing – from Farm, reception to the finished products.

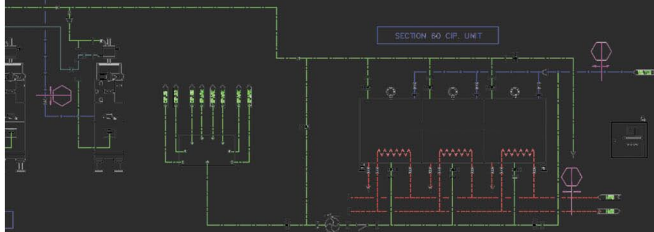
Having decades of expertise for design, construction of large and Medium scale milk product processing facilities, to the solutions for individual pieces of equipment, at SS Engineers our customer keep themselves efficient, competitive and innovation, controlling costs, improving efficiency and protecting the environment.

SS Engineers expertise covers project management, Plant installation, commissioning and after sales service.

Our in-house test centres, state-of-the-art laboratory facilities, and test equipment are available for research, product development and process optimization trials.

at SS Engineers, our customer partners with a dedicated team of experts – from inception, designing till construction and deployment,

Contact us today for tailor made:  
Ice Cream Plant, Yogurt Plant,  
Cheese Making Plant, Flavoured Milk  
Plant, Paneer Plant, Whey, Milk  
Powder Plant, Butter Making Plant



# Post Harvest Fruits, Vegetables Processing Plant & Machinery

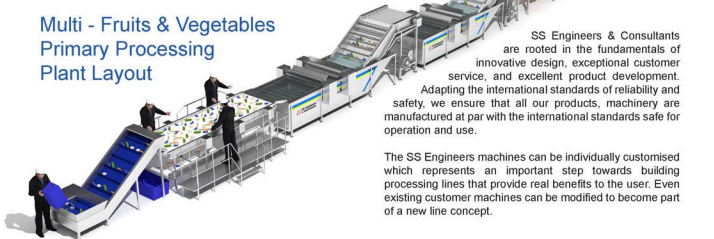


## Concepts for complete production lines and processes.

SS Engineers & Consultants offers a full line of cleaning and grading equipment that has been designed for gentle handling of your product. SS Engineers & Consultants manufactures a full line of Feed Systems, Blower Cleaners, Inspection conveyors, De-stemmers, Sizers, Brush Washers & Drying Systems. All of our cleaning & grading equipment are offered in various lengths and widths to serve individual customer's needs.

SS Engineers & Consultants is a leader in fresh packing and cleaning equipment for fruits and vegetables. We have achieved this by relentlessly working to produce new and innovative machines, offering best customer service with the latest industrial manufacturing techniques.

## Multi - Fruits & Vegetables Primary Processing Plant Layout



Equipments for Fresh produce exports:

- Mango Washing, Sorting, Grading, Heat Treatment & Packaging
- Vegetables Washing, Sorting, Grading, IQF, Packaging
- Banana Washing, Sorting, Grading, Packaging & Ripening
- Potato, Onion Washing, Drying, Sorting, Grading, Bag Packaging
- Salad Washing, Dewatering, Freezing, Packaging
- Roots & Leafy Vegetables Washing, Dewatering, Drying, Pulverising and Packaging.

SS Engineers & Consultants are rooted in the fundamentals of innovative design, exceptional customer service, and excellent product development.

Adapting the international standards of reliability and safety, we ensure that all our products, machinery are manufactured at par with the international standards safe for operation and use.

The SS Engineers machines can be individually customised which represents an important step towards building processing lines that provide real benefits to the user. Even existing customer machines can be modified to become part of a new line concept.

# Food Processing Machines Manufacturing

Welcome to SS Engineers & Consultants! SS Engineers & Consultants is a dedicated provider of processing equipment for the food industry. Our main focus areas are: Cleaning, Cooking / Blanchers, Cooling, Conveying, Cutting, Filling, Husking, Metering, Snipping, Fresh Market – Husker / Cutter, Beside Complete Production Line for Manufacture of Pickles, Fruit Pulp, Banana Flour, RTE Curries & Rice, RFC Fruit Juice, Leafy Salads, Dehydration – Fruits and Vegetables, Fruit Powder and other Medicinal Plants.

SS Engineers & Consultants can provide our customer with integrated works from design, manufacturing, sourcing, delivery, installation and commissioning for stand-alone machinery as well as for complete processing lines.

With years of experience in the food processing equipment industry in India, SS Engineers & Consultants now is active worldwide with an exclusive network of local distributors or dedicated representatives in the world. By any way, our objective is to better serve our customers anywhere in the world.

With a continuous processing line the farmer, producer significantly increase production speed over batch processing, while producing accurate portions of prepared foods that retain the fresh appearance, proper texture and great taste that consumer demands.



Packaging  
& Sealing Machine



Air Knife System



Dehydration  
Conveyor



Washing Machine



Hot Water Retort



Dewatering /  
Vibrator



Cooking Kettles



CONTACT US  
TODAY

Fresh fruit processing line, Mango pulp processing line, Banana Flour Making Plant, Fruit Dehydration Equipments, Salad Packaging Line, Leafy Vegetables Processing Line, Moringa Leaves Powder Plant, Instant Quick Freezing and Drying Machine, Ready to Eat Food Production Line, Steam / Hot Water Retort, Pickle manufacturing plant, Fruit powder manufacturing plant, Honey process & Packing Machine, Juice manufacturing line, Ketchup manufacturing plant, Puree making plant, Herbal cream manufacturing plant.

## Cleaning Crates is a problem?



Are you searching for a company that manufactures cleaning equipments?

## If your answer is yes then your search ends here.

SS Engineers & Consultants offers the latest in technology from Crates, Tubs, Bins, Pallets, Buckets, Trays, Drums, and Engineered products cleaning to the state-of-the-art hygiene material handling systems. SS Engineers and Consultants have grown drastically, since 1999, into a multifaceted, manufacturing conglomerate. With state-of-the-art manufacturing plants at Rajahmundry in Andhra Pradesh and offices spread out across the country, SS Engineers and Consultants manufactures high-tech Cleaning Machines for mass cleaning requirements in Food, Automotive, and Agri Product factories.

The company has been at the forefront of delivering international quality products suited to custom product cleaning conditions with improved cleaning technique through continuous R & D. SS Engineers & Consultants launched new high efficient cleaning, drying and handling systems for engineering and auto parts manufacturing companies.

Our manufacturing range includes Conveyor type washing equipments for washing:

Engine, Engine parts, Precision parts, Cylinders halves, Lpg cylinder, Aluminium – Stainless Steel parts, Cooked pots, Food Pasteurisation tunnel, Cooling tunnel, Bin, Pallets, Crates, Tubs, Tin, Food trays, Dishes, Plates, Utensils, Barrels & drums washing machine, Food vessels, Milk containers washing & sterilising equipments, Hot water spray tunnels, Air knife systems, Hot air heating tunnel, Air drying tunnels, Dust collecting system, De-dusting conveyors and Surface treatment equipments.

Rotary washing equipments for: precision components, industrial parts, electrical parts, special purpose cleaning

# Professional Cleaning Solutions Provider

"Small-Medium-Large"

*Application of new technologies has decreased the cost of many components, eg. Manpower, space, turnaround time for processing the material, loading and unloading, etc. "With the help of technology, processing of material has become safer & faster and the ultimate benefit is that the reduction in cost is being passed on to the customer.*

*SS Engineers washing machines fulfill the most demanding requirements for capacity, efficiency, hygiene, energy consumption and environmental protection. This applies to all sectors of the manufacturing industries - whether it concerns plastic crates for fruit and vegetables, bakery products, fresh fish and meat, dairy products beverages and the pharmaceutical industry. Wherever appropriate SS Engineers works closely with its customers to incorporate its washing plants into a HACCP system that the company may be operating as part of its overall food hygiene management system.*



EQUIPMENTS FOR MINI & LARGE FOOD FACTORIES

**SS Engineers & Consultants**

## Professional Cleaning Solutions Provider

"Small-Medium-Large"

### Process Improvement Starts Here

SS Engineers provides cost effective washing solution chosen by many leading industries.

SS Engineers & Consultants designs, manufactures Industrial Cleaning machines suitable for cleaning, drying and conveying of logistic Crates, Bins, Pallets, Drums, Trays and other Industrial Components.

The machines are made up of SUS 304 material, suitable to use with all cleaning mediums. SS Engineers can manufacture smallest to the largest capacity machines. All our machine meet the most demanding requirements for capacity, efficiency, energy consumption and environment protection.

#### Our standard machines are used at:

- Manufacturing Plants,
- Logistics Industries,
- Agri food industries,
- Automotive industries,
- Dairy & Food Products,
- Hotels & Supply Chains,
- Bakeries & Confectioneries,
- Food Distribution Centers,
- Sea Food & Fisheries,
- Food production Houses

Other range of products:

- Vegetables & Fruits washers,
- Centrifugal Spin driers,
- Automatic CIP Systems,
- Industrial Components washer
- Ultrasonic Cleaning machines,
- Material Handling Conveyors,
- Containers leak test machines,
- De-greasing machine

**SS Engineers & Consultants**

#11-18/2, Morumpudi Junction,  
Rajahmundry - 03, Andhra Pradesh, INDIA.

Ph: +91 883 2426845, 46, 47,

Fax: +91 883 2430819.

E-mail: sales.ssengindia@gmail.com

www.ssairyequipments.com



The **360°**  
Cleaning Solution



www.crate-washer.com



## Operation sequence of Industrial Crates Cleaning Machines

**Soak:** Soaking in an aqueous or solvent is the simplest, least aggressive cleaning action. It is more effective with longer immersion time applicable where soils are readily removed, cleaning time and throughput are secondary concerns and the cost of equipment is very low.



**Directed Stream:** A flushing stream of low-pressure solvent or heated aqueous cleaning fluid is applied directly to the soiled part via a flexible hose. The cleaning action is particularly effective for flushing parts when brushing. For enhanced results, the directed stream can be used in combination with other cleaning actions. While effective, throughput is limited in a system like this.

**Brush:** Manual brushing is used in conjunction with soaking as a supplement to other cleaning actions. This method is helpful in removing stubborn soils in small batches but involves manual labour. SS Engineers offer "flow-through" brushes that work with a directed stream unit to deliver cleaning solution right to the brush to flush away the removed contaminant.

**High Pressure Spray:** A quicker and more effective cleaning is accomplished by powerful spray, typically of water-based detergents. A high pressure directed stream of up to 600 psi can be focused on different areas of the parts, allowing the user to tailor the cleaning approach to the individual part. Configuration types include front- and top-loading systems with rotating platforms for semi-automatic cleaning; enclosed manual cabinet systems for precision cleaning applications; and conveyors "tunnel" systems for high throughput, automated cleaning.

## Technical highlights

### – Industrial Washing Machines:

SS Engineers and Consultants study the parts cleaning process and design well optimized machines which perform economically, there's no larger investment required for many applications.

More than 2000+ installations of washing machines all over India. Customer base includes corporate companies, midsize contractors and all other segments.

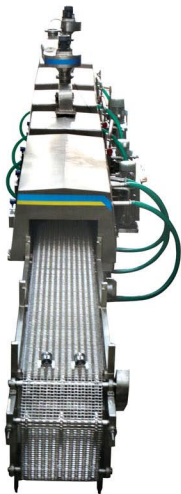
The company also offers buyback system for all its standard equipments meant for specific segment industries, and can also supply the machines on monthly rental basis.

## Industry Insight

Over the last few years, the manufacturing sector in India has witnessed tremendous growth, which is fuelled by the entry of the Multi National Companies (MNCs). This growth has brought in vast opportunities for the manufacturing units of Food, Agro, and Automotive and Engineering industries. As the Indian economy continues to grow, with an increasing export market and growth in manufacturing, the transport of perishable goods as a raw material or as part of the export market will continue to expand...

The increasing demand for quality and hygienic products is challenging India companies to keep their shelves with the right products in hygienic way. Considering the global challenge Indian Companies are adopting GMP through huge investment in Process Handling and Cleaning Systems.

Cleaning of Crates being used for the transport of food products at warehouses decreases contamination. This could also lead to improvements in Product Quality its transportation and storage, number of companies in India are investing on hygienic logistics facilities.





**ISO 9001:2008**  
**www.spfic.com**



*“We offer complete range of Valves, fittings & pumps for your process requirements.”*



## A trusted name in the market, Sri Pumps develop solutions for new needs

Sri Pumps & Fittings Industrial Corporation is leader in manufacture and export of Stainless Steel Pumps, Valve and Pipe Fittings

We consider ourselves to be experts in design, manufacture and supply of Pumps, Valves & Pipeline materials for food, pharma, chemical and Oil industries

### SS 304 / 316 Valves:

- Sanitary Ball Valve
- Butterfly Valve
- Check Valve
- Divert valve / Cut-off valve
- Plug Valve
- Pressure Relief Valve
- Sampling Valve

### SS 304 / 316 Pumps:

- Centrifugal Pumps
- Hygienic Pumps
- Engine Coupled Pumps.

### SS 304 / 316 Filters:

Pipe Inline Static Mixers, Conical Filter, Duplex Filter, Sight View Glass, Tubular Filter, Y Strainer.

### SS 304 / 316 Fittings:

- Sanitary Pipe Fittings
- SS DIN / SMS Unions
- SS Bends
- SS Equal Tee
- SS Cross
- Pipe Support Clamp
- SS Hose Nipple
- Reducer
- CIP Spray Ball
- SS Triclover Clamp
- Tube Expander.

*From our wide range of products we always able to offer our customers the effective solution for their needs.*

With over three decades of experience in manufacturing of Stainless Steel Pumps having more than 20,000 plus installations nationwide.

Today Sri Pumps is in a position to manufacture and supply its range of products in India to large industrial houses and exports to six countries.



#89-18-45, Morumpudi Junction,  
 Rajahmundry - 03, Andhra Pradesh, INDIA.  
 Ph: +91 883 2426845, 46, 47,  
 Fax: +91 883 2430819  
 Mobile: +91 9440868551  
 E-mail: sales.sripumps@gmail.com  
 www.spfic.com



## Centrifugal Pumps



### Features:

- Pump case adopt new manufacture technique as hydro forming, a volute fluid flow design to achieve more efficiency.
- Have widely applications to transfer different mediums
- Motor drawn out from pump design is easy for taking off the impeller without piping removal.
- Standard DIN flange connection.
- Reliable construction and compact design.
- Wide performance scope.
- Wet-end is all made from SUS 304 / SUS 316L material.

### Applications:

- Civil, agricultural and Industrial water supplying system.
- Making wine and Food system.
- Central heating and air conditioner system.
- Fire extinguisher system.
- Main pipe pressurizing.
- Cooling tower.
- Cleaning system.
- Swimming pool.
- Transporting industrial liquid.
- Draining and irrigating.

## Pneumatic Valves

### Single / Double Seat Valves

#### Features includes:

- 1 1/2" through 4" tube size
- 150 P.S.I. product pressure rating
- 50 P.S.I. air pressure to actuate 4" actuator or 6" actuator .
- Sturdy, machined spherical body with options: single, two & in three piece with clamped-in seat
- Elongated center to face body dimensions for easy mani fold

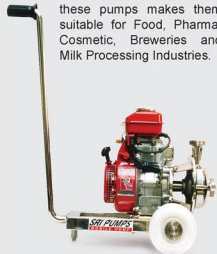
#### Options:

- Tee or cross configurations; "S" line, "I" line or butt-weld port connections, Seat Combinations to EPDM Food grade rubber.
- Micro switches / proximity switches available with solenoid valve.



## Fighter Pumps

The material construction of these pumps makes them suitable for Food, Pharma, Cosmetic, Breweries and Milk Processing Industries.



Sri Pumps Engine Pump series meets the obstinate demand in hygienic product transfer, the pumps have low noise, simple, efficient and economic in design and are easy to maintain, the Engine Coupled Pumps can be run by Petrol, Kerosene or Diesel. Available in three models T-20, T-35, T-50.



### \* Sanitary Pumps Specifications

MODEL	HP	SIZE	Head in Meter Discharge in LPH at 2900 RPM											
			4	5	5.5	6	7	7.5	8	9	10	11	12	13
0.5/38/38/90OPI	0.5	38 x 38	...	...	12480	...	9960	...	7500	...	4980	3000	...	...
1.0/38/38/95OPI	1.0	38 x 38	15960	15000	...	12480	...	9960	...	7500	4980	3000	...	...
1.5/38/38/103OPI	1.5	38 x 38	...	15000	...	...	...	12480	...	9960	7500	4980	...	3000
MODEL	HP	SIZE	Head in Meter Discharge in LPH at 2900 RPM											
			6	10	12	13.5	15	16	18	19	21	24	25.5	26.5
23838120OPI	3.0	38 x 38	22500	19980	...	15000	12480	11660	4980	3000	...	...	...	...
35151155CLD	2.0	51 x 51	...	...	30000	...	...	24960	...	22500	19980	15000	9960	7500
MODEL	HP	SIZE	Head in Meter Discharge in LPH at 2900 RPM											
			10	11	16	20	26.5	28	30	31	33	35	37	38
56351164CLO	5.0	63 x 51	...	45000	...	...	30000	24960	22500	19980	15000	9960	4980	3000
MODEL	HP	SIZE	Head in Meter Discharge in LPH at 2900 RPM											
			16	20	35	38	38.5	41	42	43	45	46	47	49
7.56351180CLD	7.5	63 x 51	60000	...	...	30000	...	24960	...	19980	7500	3000	...	...
1010076214CLD	10.0	100 x 76	51960	44250	37500	...	30000	...	24960	...	...	15000	7500	3000

## Your source for - Food Machinery.

SS Engineers entered the dairy industry in 1999 under the name of Sri Pumps & Fittings Industrial Corporation. right from the beginning the company specializes in Engineering and Fabrication of special purpose machinery, development, production and installation of stainless steel units for the dairy and hygiene Food products manufacturing units.

Sri Pumps holds about 350 employees in its 3 manufacturing units located in INDIA:

**Sri Pumps & Fittings Industrial Corporation:** Sanitary Valves & Pipe fittings, Sanitary Centrifugal, Self priming, Monoblock Pumps.  
**MRK Industries:** Ball Valves & High Pressure Pipe fittings  
**SS Engineers & Consultants:** Dairy plant & Machinery, Cleaning equipments, Tanks, Vessels and Other processing equipments.

With this group of companies specialize in Processed Food Technology; SS Engineers & Consultants has become the fastest growing company in India having significant presence in almost all the Corners of the country.



**SS Engineers  
& Consultants**

### Bulk Milk Cooling Tanks from SS ENGINEERS & CONSULTANTS, INDIA

with SS Engineers cooling tanks, your milk is **securely cooled** to maintain quality.

The basic understanding of milk cooling systems can help farmers make informed about their milk cooling compositions. The milk must be cooled at 18°C at the completion of the first milking in the milk cooling tank, and should not exceed 12°C at the completion of subsequent milking's. The cooled milk then to be maintained below 7°C till it is collected.

Raw milk grows bacteria rapidly above 7°C, therefore it is important to cool milk at farms to maintain milk quality. SS Engineers Milk Cooling Tanks are the best solution for cooling milk at the farms.

SS Engineers & Consultants manufactures cooling tanks made of high-quality stainless steel, the sizes includes from 500 to 5000 liters cooling capacities.

- Feature:**
- Environmentally friendly tank insulation from 'green' polystyrene foam, CFC-free
  - Higher cooling performance with S.T.I evaporator
  - Agitator stops automatically if the lid is opened
  - Generously sized lid opening provides optimum access to the tank, optimum cleaning and from inside
  - Runs with electronic control A4
  - Rated for Low energy consumption.



[www.ssdairyequipments.com](http://www.ssdairyequipments.com)

CAPACITY	MODEL	TYPE	BMC TANK DIMENSION			CONDENSING UNIT		
			Length	Width	Height	Length	Width	Height
0.5 KL	SSE020K	Cylindrical	1120 mm	1120 mm	1300 mm	653 mm	667 mm	470 mm
1 KL	SSE43C1K	Cylindrical <small>Open top stainless steel</small>	1875 mm	1220 mm	750 mm	935 mm	793 mm	685 mm
2 KL	SSE43C2K	Cylindrical <small>Open top stainless steel</small>	2400 mm	1480 mm	865 mm	935 mm	793 mm	685 mm
3 KL	SSE43C3K	Cylindrical <small>Open top stainless steel</small>	2620 mm	1870 mm	1300 mm	1200 mm	790 mm	690 mm
3 KL - Closed	SSE43C3K	Closed top stainless steel <small>Cylindrical</small>	3100 mm	1700 mm	1400 mm	1200 mm	790 mm	690 mm
5 KL	SSE43C5K	Cylindrical <small>Open top stainless steel</small>	3120 mm	1870 mm	1570 mm	1200 mm	790 mm	690 mm
5 KL - Closed	SSE43C5K	Closed top stainless steel <small>Cylindrical</small>	3900 mm	2000 mm	1600 mm	1345 mm	785 mm	742 mm



### Process Vessels & Storage Tanks

SS Engineers & Consultants has the depth and breadth of experience and expertise in the design and manufacture of stainless steel process and storage vessels and is able to offer capacities up to 100,000 litres although the majorities are in the 10,000 to 40,000 litres range. A variety of features include agitation, heating/cooling systems, sterile air top blanket systems and hazardous environment working conditions.

SS Engineers has more than 20 years experience in supplying solutions to the dairy food and liquid processing industries. Our wealth of experience and continued development work enables us to offer a broad range of solutions to satisfy customer's individual requirements.

**Vessel types:** Single skin, Jacketed for heating and/or cooling (e.g. dimple or plain), Insulated, Clad, (e.g. fully welded stainless steel, riveted, plastic coated steel), Agitated (e.g. turbine, impellor, gate, high shear)

**Operations:** Mixing and Blending Heat Treatment / Pasteurization Separation and Homogenization Process Vessels / Storage Tanks Cleaning in Place

A full range of support services are available to complement all or any of our process systems including: Process Design Project Management Construction Design and Management After Sales Service.

### What are the applications? Products and solutions

SS Engineers & Consultants is a leading supplier of Equipments for a wide range of sanitary applications within the food, dairy, beverage, bio-pharm and personal care industries. Our products are developed not only to meet your exacting demands for safety, reliability, efficiency and hygiene, but also to ensure the careful handling of your products.

### Why should the customer opt for these?

They had heard about SS Engineers & Consultants reputation, and believed we have the right group of engineers and craftsmen to complete their job in a timely manner, providing processing innovation.

## How strong / effective is the after sales service?

*SSEC Customer Service Rep is Full of Surprises.* SS Engineers & Consultants Customer Service Representative Shoba does more than just take orders from customers. She is also able to answer technical questions and find information that a customer might need about an item. Shoba walks customers through a process to help them find exactly what they need. Nothing unusual about that, right? Customer service is a top priority at SS Engineers & Consultants.

## How does the cost of ownership over the life cycle comp

SS Engineers & Consultants has become the source for corrosion resistant materials to meet the challenges of today's marketplace. However, the service doesn't stop there. We also have a dedicated product expert staff in place to assist you for your project consultation.

The concept of Life Cycle Costing (LCC) involves the idea that customers should make buying decisions based on long-term energy, operations and maintenance costs—not just the initial purchase price. Along with many other products, the concept is particularly applicable to pumps & motors used in the plant. SS Engineers & Consultants group companies are engaged in an awareness-raising campaign.

**“Our strategy is – to keep providing customers with the highest quality of service and grow our group through new geographies, products and services which will provide our people with the platform to flourish.”**



## What are the company's achievements?

Founded in Rajahmundry, Andhra Pradesh of India in 1999, Sri Pumps has established a solid reputation as a committed provider of Processing equipment and services to the Dairy, Food processing industries. The company has developed into a fast-growing global service company, active in 6 countries, operating 3 facilities and with more than 350 work force.

SS Engineers & Consultants received the BEST PRESENTER Award at The First Eastern South African Dairy Association Conference & Exhibition in the year 2004.

MRK Industries a subsidiary of SRIPUMPS being Certified as a Quality Supplier of Ball Valves & High Pressure Pipe fittings from CQAE, CENTRAL DEFENCE OF INDIA.

SRIPUMPS developed a Series of Sanitary Pumps, Self Priming Pumps which are high in efficiency duly, designs approved by ERDA, also certified as energy efficient pumps.

Through the start of SS Engineers & Consultants, SRIPUMPS have executed 2 Turnkey Projects of Liquid Milk Processing Plants, and have developed Versatile range of Washing equipments for Food, Dairy and Automobile Industries.

As we continue to expand we're held together by 3 simple guiding principles:

- To be safe;
- To provide quality solutions, services; and
- To add value.

At the heart of everything we do is service – through our commitment to quality we are able to build long lasting relationships with our customers, and offer them our full range of services, not just in one location but in several locations where applicable.

 **SS Engineers & Consultants**



SS  
E n g i -  
n e e r s &  
C o n s u l t a n t s  
a n d  
S E R V I C E S

9 0 0 1 : 2 0 0 0  
received 3 Preceding  
Awards from the State  
Government as the BEST  
ENTERPRENUER Enterprise  
during the year 2003, 2005, and  
2008.

# "We will find a way" attitude made the difference.

Any breakthrough product launch that made a difference?



SRIPUMPS was approached by food producers and asked to develop and market a line of sanitary fittings. Our initial reaction was, "we're too small, and we don't have the manpower or resources to undertake a venture of this magnitude." We then stepped back to really evaluate the challenge and define the goals and mission of SRIPUMPS. We recognized the need in the market and set about finding a solution. SRIPUMPS was instrumental in making the correct introductions of the interested parties to individuals. From this introduction, the sanitary line of components was born.

In March of 2007, SRIPUMPS decided to pick up the gauntlet placed before us nearly a decade earlier and enter the equipments market. The decision was made to enter as not only a Pumps & valves manufacturer, but also a fabricator of sanitary equipments. The company identified three Major things that must be in place:

1. A clearly defined product program with available stock to back it up.
2. The ability to respond quickly to the need for non-standard items.
3. A dedicated, knowledgeable person responsible for process engineering to develop the product and be a source of information for customers. Every day, the professionals at SRIPUMPS help customers find solutions to their challenging problems. To meet the growing demand we started new company in the name of SS Engineers & consultants sanitary equipments, providing turn-key solution for Milk and liquid Food industries.

How is present business environment?

## We're Growing

On June 12, 2018 SS Engineers & Consultants broke ground for a building expansion project which added 20,000 square feet to our existing facility. The new space is used to manufacture more cleaning equipments, tanks & vessels side floor space in the existing fabrication shop for larger projects.

Over the past few years, the size and number of jobs in SS Engineers & Consultants shop has grown. More Machinery has been added to the growing demands for Pumps, utility stations, valve manifolds, and other projects. We are now excited for the upcoming project which will integrate all the facilities under one roof, scheduled for September 2021. If you have never seen our facility, this would be a great time to pay us a visit. To schedule a tour, give us a call

Because Sri Pumps strives to maintain their Proactive edge, there are plenty of exciting developments planned for the future. Keep watching for advancements such as new product introductions and a new estimating program for faster response on quotations.

What are the future plans?

## Yesterday's challenge set the standard for today's mission

With our three main steps identified, in July of 2004 SRIPUMPS management dedicated personnel and capital into developing the product line. Implementing step three, CH. Srinivasarao was named the Project Manager for special applications with the clear focus on technical support, customer education and marketing.

"It is helping to make us better all around" according to Mr. CH Srinivasarao, SS Engineers & Consultants manager of projects. Utilizing the acquired information,

SRIPUMPS implemented a standard stocking program for sanitary components consisting of tubing, ferrules, reducers, weld insert rings, tees, and elbows-all designed to maintain the integrity of corrosion resistance properties during all aspects of component manufacturing.

The preparation before taking on the challenge paid off. Today, SRIPUMPS maintains the largest inventory levels of sanitary components in INDIA as a standard stock product line.

Looking to the future needs of the industry, SRIPUMPS has taken a leadership role in bringing alternative products to mainstream service in Dairy, Food processing and pharmaceutical applications **s t a r t e d** SS Engineers & Consultants ([www.sseengrindia.in](http://www.sseengrindia.in)).

It was timely a wise decision to meet yesterday's challenge when it was set before us. Today the understanding and insight we learned helps us as we continue to meet the challenges of tomorrow.

Thanks to all our customers



### Our Mission:

To be among the global leader in manufacturing of high quality Sanitary Equipments and services provider in Dairy, Food processing and Pharmaceutical industries.

From design through delivery, we focus on providing you with an extraordinary **value** in the valve that has the right design, the right price and the right delivery time.



## Why choose **MARK Valves** ?

MRK Industries learnt over the years that each valve has to be specifically designed, built to perform to the customer's specific service conditions.

**MARK Valves** save's end users money for several reasons....First because of the extreme corrosion resistance stainless steel body, and MRK Valve typically has a product lifetime that is many times longer than other specialty metals.

### Users Benefits

- Longer product life
- Less maintenance
- Competitive prices
- Less unscheduled downtime
- Consistent product performance
- Allows focus on core business
- Most corrosion resistant metal
- 3-Year Performance Warranty



Our world class manufacturing facility, with ISO 9001 Quality System, is equipped to provide all certificates of compliance



[www.mrkindustry.com](http://www.mrkindustry.com)



#11-49, Morumpudi Junction, Rajahmundry-533103, Andhra Pradesh, INDIA.

Ph: +91 883 2426845, 46, 47, Fax: +91 883 2430819, E-mail: sales.markvalves@gmail.com

# SRI PUMPS & FITTINGS INDUSTRIAL CORPORATION

VALVES,  
& PIPE  
FITTINGS

SRI PUMPS MFG. CO.,

SANITARY  
PROCESS  
PUMPS

MRK INDUSTRIES

INDL  
BALL  
VALVES

TECHNOLOGY

 **SS Engineers  
& Consultants**

Manufacturers of Dairy, Pharma, & Chemical equipments, Tanks, Vessels, Industrial Cleaning equipments, Turnkey projects – food processing, liquid food, milk and milk products. Sanitary Pumps, Valves and Pipeline Fittings for process industries



 **SS Engineers  
& Consultants**

D.No. 11-49/2, Morampudi Junction,  
Rajahmundry - 533107, Andhra Pradesh, INDIA.  
Ph: +91 883 2426845, 46, 47, Fax: +91 883 2430819  
e-mail: response.sseengrindia@gmail.com  
[www.sseengrindia.in](http://www.sseengrindia.in)